

IN-6014 HD

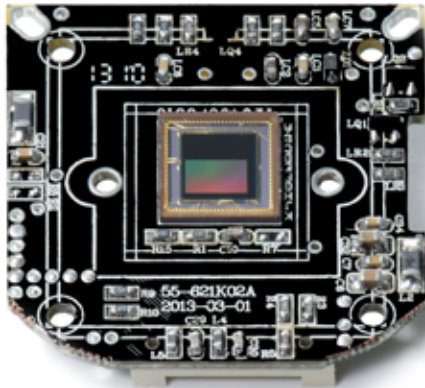
- / Integrated Passive Infrared Motion Detector
- / Wide Dynamic Range 720p CMOS Sensor for adverse lighting conditions
- / Automatic alarm by email and FTP video upload
- / Video recording on SDHC card (up to 32 GB)
- / Easy camera configuration via the integrated WebUI
- / Multi-level user management and access control
- / Accessible over the internet via preinstalled DDNS address
- / Full smartphone integration (iOS & Android App)
- / Scheduled motion detection via image analysis



ONLINE
WDR

INH
ND
6014

Wide-Dynamic Range CMOS Sensor



The OmniVision® WDR Sensor raises the bar in security imaging with a single-chip SOC sensor that combines **720p high-definition video** with WDR in a 1/3-inch optical format.

The sensor is built on a 4.3 micron OmniPixel3-HS™ pixel enabling 720p HD at unparalleled low-light sensitivity and a dynamic range in colour of 115dB - compared to the 60 dB of a regular VGA IP camera. Allowing you to capture detail-rich colour video even in **high-contrast lighting conditions**.



The 1280x720 pixel array provides 720p HD video at 25 frames per second broadening the scope of your surveillance.



INSTAR HD IP Camera – Quick Installation

IN-6014 HD and IN-6014 HD PoE

The following topics will be shortly explained in this Quick Installation Guide:

1.	SAFETY WARNINGS	3
2.	PRODUCT FEATURES	4
3.	INSTALLATION	5
4.	START UP	8
5.	THE WEB USER INTERFACE	11
5.1	SOFTWARE	12
5.1.1	LANGUAGE	12
5.1.2	REBOOT/RESET	12
5.1.3	BACKUP	12
5.1.4	UPDATE	12
5.2	NETWORK	13
5.2.1	IP CONFIGURATION	13
5.2.2	WiFi (<i>not for IN-6014 HD PoE</i>)	13
5.2.3	DDNS	14
5.2.4	Point-to-Point (P2P)	15
5.2.5	UPnP	15
5.3	SYSTEM	16
5.3.1	DATE & TIME	16
5.3.2	USER	16
5.3.3	STATUS LED	16
5.3.4	IR LED	16
5.3.5	ONVIF	17
5.3.6	PTZ	17
5.4	MULTIMEDIA	17
5.4.1	AUDIO	17
5.4.2	VIDEO	17
5.4.3	IMAGE	18
5.5	ALARM	18
5.5.1	AREAS	18
5.5.2	ACTIONS	19
5.5.3	SCHEDULE	20
5.5.4	SMTP SERVER	20
5.5.5	EMAIL	20
5.5.6	FTP	21

5.5.7	AUDIO ALARM.....	21
5.5.8	SD CARD.....	22
5.6	RECORDING.....	22
5.6.1	SCHEDULE.....	22
5.6.2	VIDEO.....	22
5.6.3	PHOTOSERIES.....	22
5.7	MENU BAR.....	23
5.7.1	SD CARD.....	23
5.7.2	SNAPSHOT.....	23
5.7.3	RECORD (<i>only Internet Explorer</i>).....	23
5.7.4	PLAYER (<i>only Internet Explorer</i>).....	23
5.7.5	HELP.....	23
5.7.6	MJPEG (h.264).....	24
5.7.7	ALARM.....	24
5.8	VIDEO MENU BAR.....	24
5.8.1	AUDIO (<i>only Internet Explorer</i>).....	24
5.8.2	MICROPHONE (<i>only Internet Explorer</i>).....	24
5.8.3	DIGITAL ZOOM (<i>only Internet Explorer</i>).....	24
5.8.4	RECORD PATH (<i>only Internet Explorer</i>).....	24
5.9	WEB USERINTERFACE UPDATE.....	25
5.9.1	PAN&TILT CONTROL.....	26
5.9.2	CONTROL PAD.....	26
5.9.3	POSITIONS.....	26
6.	RESET YOUR CAMERA.....	26
7.	LENSE ADJUSTMENT.....	27
8.	ANDROID AND iPHONE APP.....	27
9.	WINDOWS SOFTWARE.....	29
10.	RTSP STREAMING.....	30
11.	TECHNICAL DATA.....	31
12.	WARRANTY & DISPOSAL.....	32
13.	FAQ Questions & Answers.....	33
14.	AVAILABLE ACCESSORIES.....	34

This manual is for the IP camera models **IN-6014 HD** and the **IN-6014 HD PoE**. Unless otherwise noted, operations are identical for both models. All photos and illustrations show the model **IN-6014 HD**.



Your Manufacturer for Network and
Security Technology

1 | SAFETY WARNINGS

Please read the following safety warnings carefully and keep them in a safe place.

- » Make sure the power cord is not near any hot surfaces.
- » Place the Power and Network cable properly so that no one can be hurt.
- » This device shall not be used by people (including children) with limited physical, sensory and mental capabilities. Only the trained person that knows how to use the device carefully can use the device.
- » Children should be supervised to make sure they don't play with the device.
- » If the power cord of this device gets damaged, it can only be replaced by the manufacturer or the customer service person or a similar qualified person to avoid any damage to you and the device.
- » Never do any repair by yourself. By opening the device the warranty will automatically expire. If any repair is needed, please contact your INSTAR Service Center.
- » When cleaning, please never place the device in water.
- » Make sure you only install the device in a 100V - 240V power socket.
- » This device is only suitable for indoor use.
- » Only use this device to secure your home, office and similar places. If you are planning to install the device in a public area please make sure you have all certificates to do so.
- » Never install the device near explosive or flammable substances.
- » Don't use the camera for any other purpose that it isn't made for.
- » INSTAR does not give any warranty if you use any third party firmware or WebUI.

CE-Conformity



This device suites the basic requirements of the European regulations for electromagnetic compliance (2004/108/EC) and the low voltage regulations (2006/95/EC).

2 | PRODUCT FEATURES

Hardware

- » *Wide Dynamic Range Megapixel* CMOS sensor and ARM media processor
- » 12 Infrared-LEDs for nightvision 5 - 8 m
- » Resolution: **720p** (1280 x 720), 640 x 352 and 320 x 176
- » Integrated passive Infrared Motion Detector
- » Automatic **IRcut** filter for realistic colours during the day
- » Integrated **SDHC** card slot for SD cards up to 32 GB
- » Pan&Tilt: 350 ° horizontal and 90 ° vertical

Connectivity

- » 10/100Mbit ethernet interface to connect to your router or PC
- » **WLAN** compatible - 2.4 GHz Wi-Fi 802.11b/g/n (not for IN-6014 HD PoE)
- » Remote access your live video with your smartphone (**iOS & Android**)
- » Only the model **IN-6014 HD PoE** can be used via 802.3af *Power-over- Ethernet!*

Software

- » **h.264** video encoding for reduced bandwidth requirements
- » Video and snapshot recording on SD card is supported
- » Video recording by alarm and FTP upload (only with SD card)
- » Software based motion detection by image analysis / Alarm notification by email
- » Email and FTP snapshot upload - continuous and alarm triggered

Power over Ethernet or **PoE** technology describes a system to pass electrical power safely through the unused lines 4,5,7,8 on the Ethernet cable. The IEEE standard for PoE requires category 5 cable or higher for high power levels. The power comes from a power supply within a PoE-enabled networking device such as an Ethernet switch or power injectors that stand between a regular Ethernet switch and the powered device (**not included**).

Due to the mandatory Ethernet cable connection all PoE cameras will be **without** wireless LAN (WiFi) support. All sections regarding wireless LAN are only effective for the camera model IN-6014 HD (and **not** for the model IN-6014 HD PoE).

3 | INSTALLATION



Fig. 1 Front

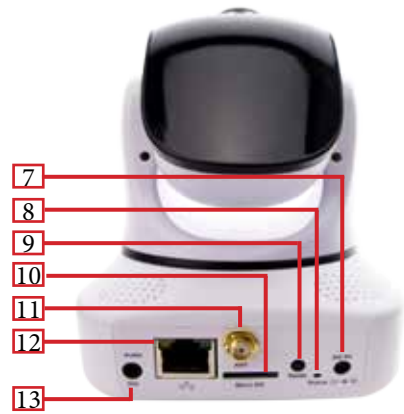


Fig. 2 Rear

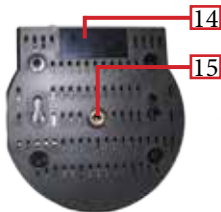


Fig. 3 Bottom

1	Photosensor	Twilight-Switch for IR LEDs
2	Lense	Wideangle-lense (focal length: 4.3mm / field of view: 90.° hor.)
3	Infrared-LEDs	12 IR LEDs (nightvision @ 850nm)
4	PIR Detector	Integrated passive Infrared Motion Detector
5	Loudspeaker	Integrated Loudspeaker (s. 5.7.2)
6	Microphone	Audio transmission (s. 5.7.2)
7	Power Connector	5V / 1.5 A DC - Plug Ø : 1.35mm (in) / 3.5mm (out)
8	LED Indicator	Red: power LED; blue: Status-LED for network traffic
9	Reset Button	Reset your camera settings to the factory defaults
10	MicroSD Card Slot	Slot for SD/SDHC cards (up to 32 GB - 4 GB included)
11	Antenna Connector	SMA WiFi antenna connector (Not available in case of the IN-6014 HD PoE model!)
12	Network Port	RJ45 LAN-port for the provided CAT5e LAN cable (For the power supply according to IEEE802.3af only in case of the IN-6014 HD PoE!)
13	Audio Out	3.5mm earphone / active speaker jack
14	Camera ID	MAC address LAN and QR for the P2P connection
15	Stand Mount	Standard camera thread for provided stand support

Connect the camera to your Network

Take out the package content from the box: the camera, a CAT5e LAN cable, a 2.4 dBi SMA WiFi antenna (not for the *PoE model*), mounting bracket and the software CD.



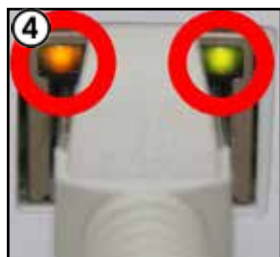
Connect the **WiFi antenna** to the SMA connector on the back of camera (see #11, page 5), align it vertically to your router and place the camera close to your Wifi router for the rest of the installation process. Please be aware that the camera has to be installed via LAN cable first before it can be used in your wireless network - for an alternative please refer to the included flyer Plug&Play for a WPS integration. ***You can skip this step in case of the PoE model.***



Plug the **ethernet cable** to the RJ45 LAN port on the camera case (see #10, page 5) and use it to connect the camera to a free LAN port of your network router. For a direct connection to your Windows PC or Mac, please refer to our online FAQ section on www.faq.instar.de. But we recommend to connect the camera to your network router for the initial installation.



Connect the **power adapter** to the camera cable (see #12, page 5) and plug it into a suitable power outlet. Both network indicator LEDs on the network port will light up showing that the camera is connected to your network. The camera will now execute a pan&tilt calibration. This step is optional for the PoE model which can be used over PoE as well as via the included power supply.



The **orange LED** signals a hardware link to your router and therefore should be on continuously. The **green LED** should be flashing irregularly indicating network traffic. The green status LED on the powersupply has to be on continuously indicating a steady power supply. Please plug the powersupply directly into a wall socket. Using it on a multi power strip or an extension cord is not recommended.

Troubleshooting

The orange LED isn't on

Your camera doesn't have a connection to your router because the LAN cable is damaged, the connector is loose or your camera is connected to a wrong port on your router or switch.

The orange LED goes on and off every x seconds

Your camera is continuously restarting - possibly because of a loose contact. Please check the power connector on the camera side. Turn the plug by 180 degrees in both direction and check if the problem persists. Make sure the green status LED on the power supply is on continuously.

For a **direct cable connection** between camera and computer, please note:

The network cable provided with the camera is not a crossover cable. It is just a normal patch cable. Most modern computers network interfaces support the automatic switching between crossover and normal patch cable - you can use the cable that came with the camera to connect it directly. If you are using an older system to connect your camera directly you might need a crossover network cable.

To set up the camera for the first installation we recommend to connect the camera directly to your router. This router on the other side has to be connected with your computer. Other ways of connections are only recommended to experienced users. Please refer to our online documentation on www.faq.instar.de.

Connect the camera using an IN-LAN® Adapter (optional)

Simply plug one IN-LAN adapter into a power socket next to your broadband router and connect the adapter to your router via an Ethernet cable. Plug the second IN-LAN unit into an outlet close to your INSTAR camera and connect the camera to the IN-LAN adapter using the camera's Ethernet cable.



IN-LAN 500/p
Powerline Adapter

IN-LAN uses the household power grid to transfer data between computers equipped with suitable adapters and other network components. As a result, any power outlet can be used as a network access point. IN-LAN is an intelligent and secure technology that lets you set up a home network easily via your household power grid - without the need of complex and expensive dedicated cabling.

Additional accessories, like the IN-LAN Adapter, can be found in the accessories of your camera model on www.instar.de and are sold separately.

4 | START UP

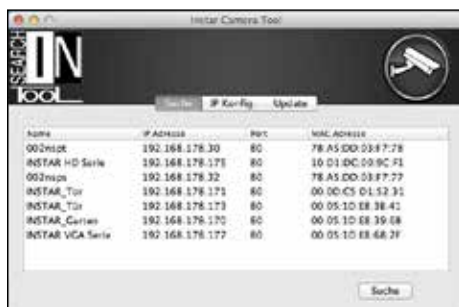
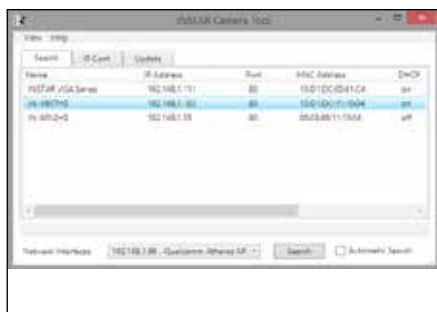


You can also start the online setup wizard manually from the included Installation.htm file on the CD or download the tool directly from www.install.instar.de. Alternatively simply check your router log file for a new DHCP address to avoid installing additional software. Your camera will send a request for an IP address once connected to the router via LAN cable and your router will list the camera as a new device.



4.1 | NETWORK INSTALLATION

- ① Please start the setup wizard from the CD and install the INSTAR Camera Tool linked on the CD for Windows, LINUX or MacOS. (You can find documentations for the use of other IP scanners on www.faq.instar.de)
- ② Please start the INSTAR Camera Tool.
- ③ The camera tool will automatically find all INSTAR IP cameras in your network and will show their IP address.
- ④ In case your camera isn't found right away please wait 10 to 15 seconds for your routers DHCP service to assign an IP address to your camera.



- ⑤ Doubleclick the camera's IP address inside the camera tool to open the web user interface (webUI) with your default browser and you will be greeted by the camera's login window. If so, please skip the following paragraph and go straight to **4.2 THE LOGIN** (see page 10).

Troubleshooting:

In case the INSTAR Camera Tool doesn't find your INSTAR IP camera please make sure that both status LEDs on the LAN connector are active - the orange LED should be continuously on indicating a hardware link and the green LED should flash irregularly showing network communication.(see page 7).

In case your camera isn't automatically assigned an IP address, the camera will be shown inside a *wrong* IP address space. A double click on the camera's IP will then open the IP / Network configuration window (see below) allowing to manually assign an address.



Please set the following information according to your network:

- **IP Address** (for example 192.168.x.x)
- **Subnet Mask** (for example 255.255.255.0)
- **Gateway** (IP Address of your router; for example 192.168.x.1)
- **DNS Server** (IP Address of your router; for example 192.168.x.1)
- **Http Port** (TCP Port; for example 80)

To check the IP address of your Windows computer and your network parameters please do the following:

- ① Click on [START] -> and type in "cmd" into the search field.
- ② In the window that pops up please type "ipconfig".
- ③ Now the IP address and the subnet mask will be shown.

```
Ethernet adapter Local Area Connection:

Connection-specific DNS Suffix . : fritz.box
Link-local IPv6 Address . . . . . : fe80::4d73:fc13:dc1b:5018%
IPv4 Address. . . . . : 192.168.178.93
Subnet Mask . . . . . : 255.255.255.0
Default Gateway . . . . . : 192.168.178.1
```

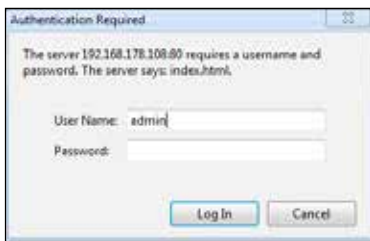
EXAMPLE:

If your computer's IP address is "192.168.178.10" then please give your camera an IP like this "192.168.178.110". For Subnet mask, Gateway and DNS Server please use the same settings as for your computer (s. above). If your computer has the IP "192.168.178.10" then the Gateway and DNS should be "192.168.178.1" and the subnetmask is "255.255.255.0".

How to setup your Camera without a router:

If you want to connect your camera directly to your computer, please set a fixed IP address for the network interface in your computer, as well as for the IP camera. You can set the camera IP by using the INSTAR Camera Tool. As for Gateway and DNS server please fill in the computer IP. After submitting the settings to the camera please wait a moment until the camera has restarted. For a detailed instruction please refer to our FAQ section on www.faq.instar.de.

4.2 THE LOGIN

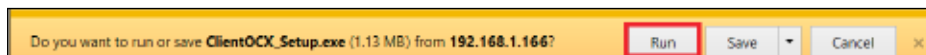


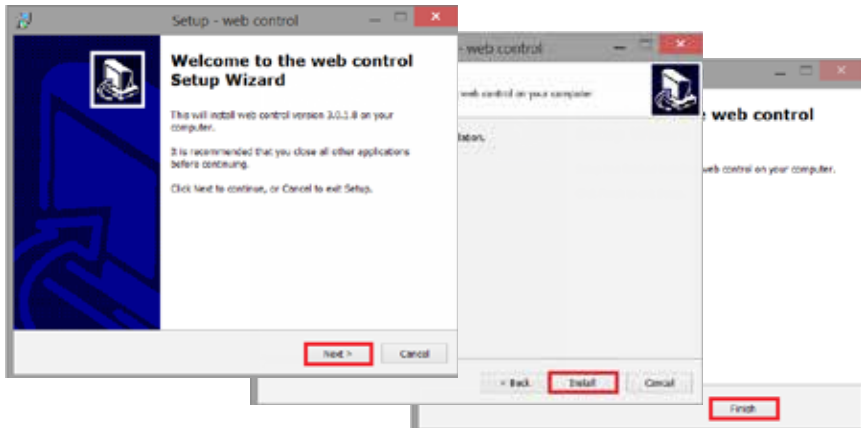
For the first installation of the camera please log in with the following username and password:

user:	admin
password:	instar

4.3 PLUGIN INSTALLATION (only Internet Explorer)

After the login (**Internet Explorer**) you will be asked to install the ActiveX control element. Please run it and confirm when your Internet Explorer is asking you to install the control element:

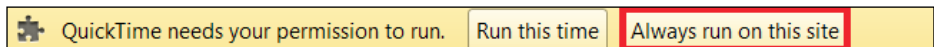




When accessing the webUI for the first time after installation, please allow the installation of the ActiveX control element (only **Internet Explorer**):

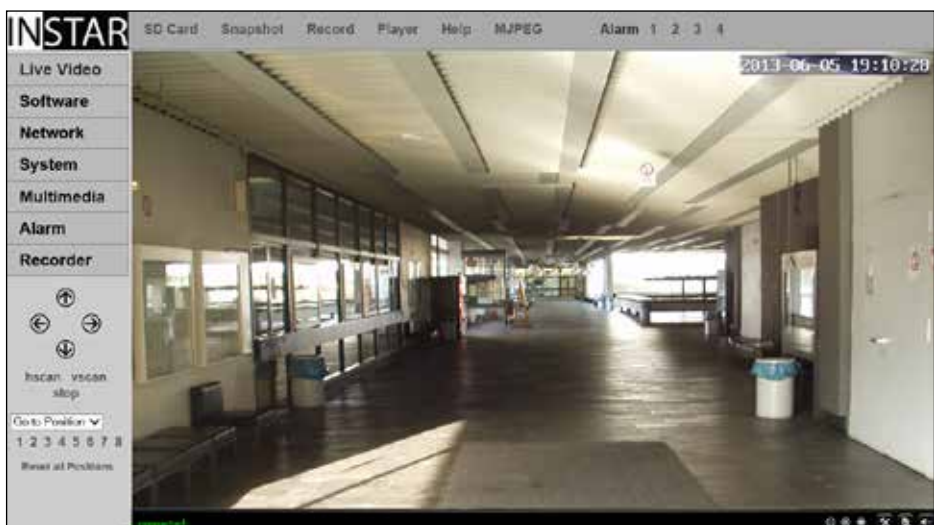


For alternative browsers (Firefox, Chrome, Safari,...) please install the QuickTime Plugin. In case the plugin is installed already please confirm its permission (see below). If the Video doesn't start, [please refer to chapter 13 FAQ](#).



5 | THE WEB USER INTERFACE

powered by HTML5/CSS3 & jQuery



5.1 SOFTWARE

5.1.1 SOFTWARE/LANGUAGE



Here you can choose the language of the web user interface. The web user interface will reload after you click **submit**.

5.1.2 SOFTWARE/REBOOT-RESET



Here you can check the user interface and firmware versions. To restart or reset your camera simply check the corresponding box and click **submit**. To avoid an unwanted reset, a remark will be shown in a new window and you need to confirm the command a second time after a **10 seconds** countdown.

5.1.3 SOFTWARE/BACKUP



To save your camera settings please check the corresponding box, click **submit** and you will be asked for a file path and name. The default is `config_backup.bin` and the file path is the download folder of your browser. To restore the settings check “**Load Backup Copy**”, browse for the backup file and click **submit**.

5.1.4 SOFTWARE/UPDATE



You can download regular software updates for your camera from www.download.instar.com. Please use the browse button to set the file path once you downloaded and unzipped the update BIN and click “**Submit**” to upload the file to your camera. Use the update function only when the camera is connected to the router by **LAN cable**!

5.2 | NETWORK

5.2.1 NETWORK/IP CONFIGURATION



You can set whether the camera will be assigned an IP address by your router (DHCP) or, if you want to manually set a fixed address. Please check **page 8/9** on how to set a fixed IP address. In general, we recommend that you **deactivate** the automatic service and set a manual IP to avoid further trouble with the remote access to your camera. For the RTSP Port please refer to **10. RTSP Streaming** for details on the use of the camera's RTSP videostream.

5.2.2 NETWORK/WiFi (not in the PoE model!)



If you cannot use the WPS service (**Wireless Protected Setup**) to integrate the camera into your local WiFi network - see included flyer *Plug & Play* for further information for the WPS function - click search to start the WLAN

Altkon.	BSID	SSID	Verschlüsselung	Authentifizierung
Übernehmen	-RT	instar	AES	WPA2-PSK

scanner. Just choose your own network and click "Join". Now you just have to add the WiFi password (WLAN

Key) and click *submit* to save the settings. Afterwards you can use the **Test** function to verify your settings. Please disconnect the LAN cable and restart the camera (simply unplug the power supply for 3 seconds). The camera will automatically - within **max. 5 minutes** - connect to your WiFi network. The camera's WiFi module will receive a new address from your router - in case you didn't assign a static IP address to your camera yet (s. 5.2.1). You might have to use the INSTAR Camera Tool again to rediscover your camera (s. 4). Your camera is now connected via WiFi!

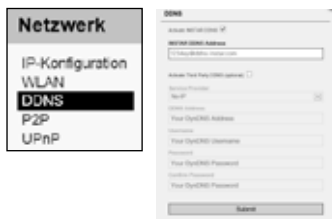
Attention:

Your WiFi module's MAC address is **not identical** with the LAN MAC address of your camera! In case you are using a MAC filtering rule for your WiFi network please deactivate the filter and add your camera to the list of trusted devices before reactivating it.

Additional Remark:

Your camera supports a range of encryption standards - we recommend for your safety and reliability of your connection, that you set your WiFi network to WPA2 (PSK) with AES (or CCMP). With older routers choose WPA (PSK) / AES. Avoid using a mixed mode like WPA&WPA2 - TKIP! If your WiFi stays unstable please choose a fixed WiFi channel for your router - we recommend the channels 1 - 6.

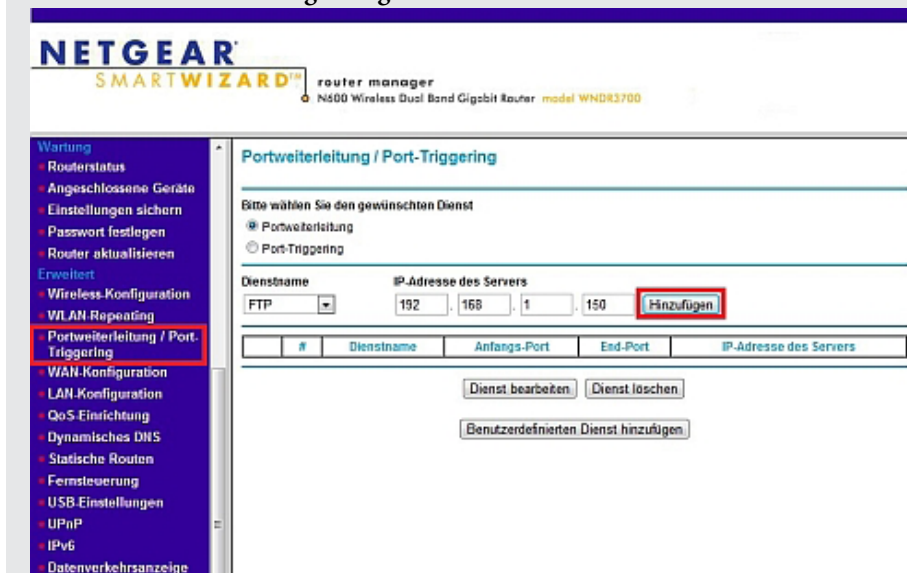
5.2.3 NETWORK/DDNS



Your camera comes with a personal DDNS address - e.g. <http://xxxx77.ddns-instar.de>. Everything you need for a remote access to your camera is a **port forwarding** rule (s. next page) in your router. You can access your camera afterwards through the internet using this http address.

Please visit our online FAQ section on www.faq.instar.de for detailed information on the port forwarding setup as well as video instruction for many common routers. Or refer to your router's user manual for further guidelines on how to set up a port forwarding rule.

EXAMPLE Portforwarding - Netgear:

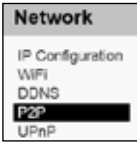


Please refer to our online help www.faq.instar.de for detailed instructions for all common routers.

In case you want to use an account from DynDNS.org simply choose the third party service and type in your personal login credentials. By doing so you will temporarily **deactivate** your INSTAR DDNS address.

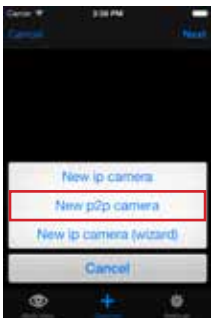
In case you are using several cameras behind a single internet access point, please set up the third party address in **only one** of the cameras. Or if possible directly inside your router! All your cameras will be accessible through this address - just assign a unique HTTP port to every camera (s. 5.2.1). For example if *camera 1* is assigned the HTTP port 85 and *camera 2* the HTTP port 86, use *myaddress.dyndns.org:85* to reach *camera 1* and *myaddress.dyndns.org:86* to be forwarded to *camera 2*.

5.2.4 NETWORK/Point-to-Point (P2P)

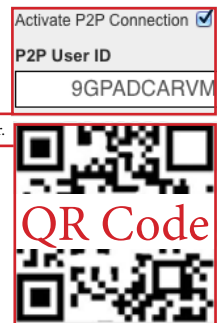


Activate the p2p function to access your camera from the internet without the need for a port forwarding in your router (s. 5.2.3). Simply add the camera as a p2p camera in our **InstarVision app** (s. 8), scan the QR code on the Network/P2P overlay in the WebUI or from the sticker on the camera and add the camera **administrator login** (s. 4.2).

You can access your camera even **behind an IPv6 connection or or mobile AP** (UMTS/LTE, with changing WAN IP) ! Use the p2p function to access your camera from the internet, when you cannot set a port forwarding for the camera necessary for the DDNS service (s. 5.2.3).

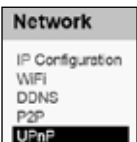


Manually type in your User ID or...
...use the automatic network or QR scanner.



There are 3 ways to connect your camera. You can choose the apps **Search function** to discover the p2p camera inside your local network, **type in the User ID** from the camera's web UI (or the sticker on the camera case) or use the **QR code scanner** to scan the QR code (just hold your smartphone over the QR code - the scanner works automatically). The QR code in the web UI is created dynamically and will contain all information the app needs to set up your camera. The QR code on the sticker will contain the camera's default settings to allow you to quickly set up the camera. We recommend that you change the administrator password for the camera (s. 5.3.2) and use the QR code from the web UI.

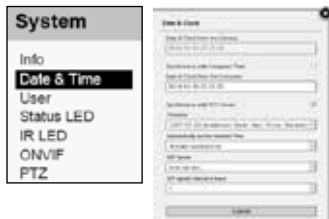
5.2.5 NETWORK/UPnP



If you are using **Universal Plug and Play** for your network devices. Please activate the UPnP service in your camera. In case you are using a manual port forwarding rule in your router to access your camera from the internet, make sure the cameras UPnP service is deactivated! We recommend setting up a manual port forwarding.

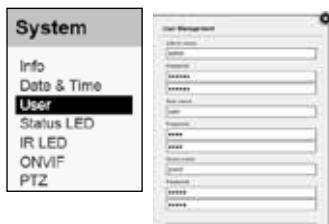
5.3 SYSTEM

5.3.1 SYSTEM/DATE & TIME



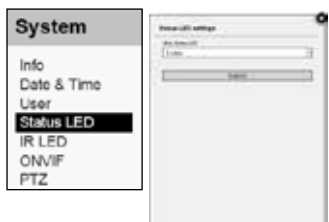
You can set up the internal clock of the camera to be either synchronised with your PC clock or with one of several NTP servers. As long as your camera has access to the internet it is recommended to use an NTP server synchronisation to achieve a higher accuracy for alarm trigger events. Please activate “Consider Daylight Saving Time” when in effect.

5.3.2 SYSTEM/USER



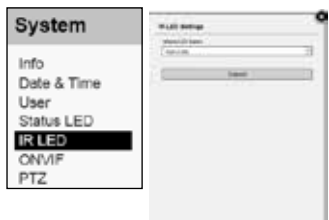
The web user interface offers a 3-level user management with different access rights for administrators, operators and visitors. You can set user names and passwords for all three user levels in the **Users** mask. *Guests* will only have access to the videostream of the camera, *Users* in addition are able to use the pan&tilt function and only the *Administrator* will have access to all the camera's configuration menus.

5.3.3 SYSTEM/STATUS LED



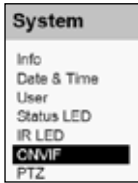
Here you can adjust the behaviour of the red Status LED at the power connector of the camera. Enable it to have it display camera activity - which is especially helpful during the installation process. Or deactivate it for normal operation.

5.3.4 SYSTEM/IR LED



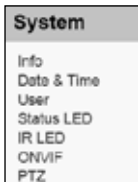
Here you can adjust the behaviour of the infrared LEDs of the camera. You can choose between 2 modes in which the LEDs are either always off or automatically switched on by a photodiode when it is getting dark.

5.3.5 SYSTEM/ONVIF



ONVIF is a global standard for the interface of IP-based security products. The ONVIF specification will ensure interoperability between products regardless of manufacturer, allowing you to integrate your INSTAR camera as a generic ONVIF camera into existing security systems.

5.3.6 SYSTEM/PTZ



Here you can disable the cameras calibration run during start-up (please note that this also deactivates your saved positions!), send it to saved position 1 after a reboot and set the speed and number of auto-scans for the pan & tilt movement.

5.4 | MULTIMEDIA

5.4.1 MULTIMEDIA/AUDIO



Here you can adjust the amplification of the cameras microphones/audio-in as well as the volume of the audio-out signal.

5.4.2 MULTIMEDIA/VIDEO



The video settings allow you to adjust the quality of all 3 videostreams of your camera. Please be advised that high quality settings come with high requirements for your computer hardware and network bandwidth. Adjust the video quality to obtain a fluent video accordingly. Please refer to **chapter 10: RTSP Streaming** for accessing the cameras streams 2 and 3.

The MJPEG mode of the camera allows you to access the videostream with your browser **without** the need of **additional browser-plugins!** You can use the MJPEG mode when you are accessing the camera from a system that doesn't allow you to install the ActiveX control element or the QuickTime plugin for Firefox, Chrome or Safari. Please consider that this mode is only for viewing the live image of your camera. Even with only one user logged in, your cameras framerate might drop below **4 fps** because of the high bandwidth requirements!

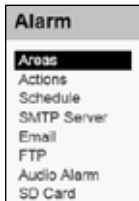
5.4.3 MULTIMEDIA/IMAGE



Here you can adjust the image parameters brightness, saturation, contrast, exposure (shutter) and sharpness. You can flip and mirror the video image, can display a timestamp and set a camera name and display it as well. The displayed parameters are burnt into the camera image. Please make sure to restart the camera after changing the name.

5.5 | ALARM

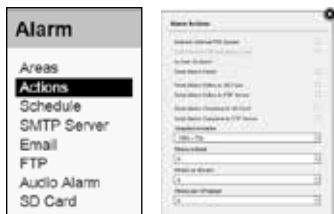
5.5.1 ALARM/AREAS



The alarm areas detect motion by a picture analysis that is sensitive to every change inside the video frame instead of employing an infrared or microwave sensor. In "Areas" you can adjust up to 4 detection areas in size - just activate an area and draw its shape onto the image - and sensitivity for trigger events. Once the motion detection in an area is activated, its **sensitivity** can be adjusted from very insensitive (value=0) to very sensitive (value=100).

In case the camera's position is prone to rapid light changes, e.g. changes in sun intensity due to cloud movements, you might be confronted with a high number of false alarms. In this case please refer to 5.5.2 for employing the internal PIR motion detector.

5.5.2 ALARM/ACTIONS



Adjust the cameras behaviour in case of a motion alert trigger event. You can set the camera to send you an **email** and to save snapshots or videos on your **SD card**. Please make sure you set your SMTP server settings before activating the email notification (s. 5.5.3 & 5.5.4) and that you have a SD card in your cameras SDHC card slot (max. 32 GB) to use the video recording and send-to-FTP function (s. 5.5.6) - a 4 GB SD card is included in the delivery.

The IN-6014 HD gives you two options to detect motion in front of the camera. The software-based detection can be set in 5.5.1 Alarm Areas. This detection mode does not need any additional hardware to work and can be very precise in controlled indoor environments. The disadvantage is that the detection does not discriminate causes for changes inside the cameras field of view - a cloud moving by in front of the sun, rain-drops or vegetation moving in the wind. Everything can cause an alarm.

Activating the PIR sensor allows you to limit the motion detection to bodies whose temperature differs from the background. In most cases, this will be a person or animal in front of the cameras or the warm motor of a car. Changes in light conditions, fog in front of the camera at night or movements in the wind will not be detected by the PIR sensor.

By coupling the PIR sensor with the detection areas, you will only get an alarm event if both detection methods were triggered at the same time. This will greatly reduce the number of false alerts you might have. But be aware that it also might eliminate a few positive alerts - use this function with caution.

**IN-
Motion**



IN-Motion 300

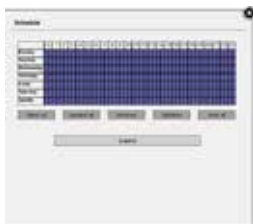
Plug & Play - PIR Motion Detector

IN-Motion 300 - the passive infrared detector especially designed for INSTAR camera models without an integrated sensor. The simplest way to avoid false alerts by changes in light conditions.

All components needed for the installation are already included in the delivery !

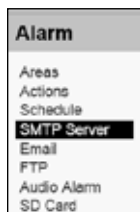
Additional accessories, like the IN-Motion 300, can be found in the accessories of your camera on www.instar.de and are not part of the scope of the delivery.

5.5.3 ALARM/SCHEDULE



Here you can define a time schedule in which the motion detection, that was set in 5.5.1 and 5.5.2, should be active. Every blue square represents 30 minutes of armed motion detection. Please make sure to set the correct time zone in 5.3.1 as it will be used by the camera.

5.5.4 ALARM/SMTP SERVER



You have to fill in your SMTP login credentials of your personal email account to enable your camera to send you a notification email in an alarm trigger event. Simply use the same login information that you use for email clients like Microsoft Outlook or Mozilla Thunderbird. The SMTP user name and password are the same that you use to login to your email account. Please check your email providers homepage for the SMTP server address, server port and encryption:

Gmail - smtp.gmail.com (STARTTLS; Port 587)

GMX - mail.gmx.net (STARTTLS; Port 587)

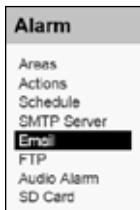
T-Online - securesmtp.t-online.de (STARTTLS; Port 587)

bluewin.ch - smtpauth.bluewin.ch (STARTTLS; Port 587)

Strato - smtp.strato.de (STARTTLS; Port 587)

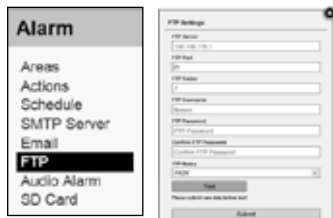
The camera will use this email address to send you alarm notification. You can set the email recipient under 5.5.4.

5.5.5 ALARM/EMAIL



Here you need to input the sender, the receivers, the subject as well as optional a short email text of maximum 64 characters. The sender address should be in accordance with the SMTP server data (s.5.5.4), though some email provider let you choose this field freely. If you want to send the email to more than one address, simply separate the addresses with a semicolon ';'. E.g. max.mustermann@instar.de;franz.fingerhut@instar.de

5.5.6 ALARM/FTP



To use the video FTP upload (s. 5.5.2) you first have to set your ftp server address and login credentials. E.g. you can use your routers FTP service as **FTP Server** - in this case simply put in your routers IP as the FTP Server address. If you set up a FTP server on a local PC (for example with *Filezilla Server*), use the PC's local IP address. Of course you can use webservers URL's as well. The standard **FTP port** is 21.

You can define an upload directory for your camera under **FTP Folder**. The root folder of the FTP server can be reached by “./”. The separator for the folders is the forward slash. A subfolder (e.g. INSTAR) can be reached by “./INSTAR”. An ending forward slash is not obligatory, but can be used.

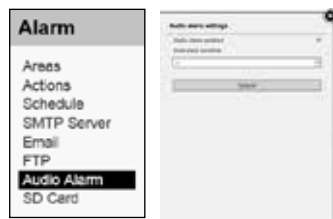
The **FTP Username** and **FTP Password** are the login credentials for your FTP Account.

For the **FTP Mode** you can choose between a passive (PASV) and an active mode (PORT). The standard is the active PORT mode. If your server is installed behind a router with an active network address translation (NAT), or if a firewall is blocking the servers network from an external access by your camera, you should choose the PASV mode.

The name of the video file is fixed and correspond to the following syntax: rec011_YYYYMMDDhhmmss.asf. The first part show the channel 11 for recording. Separated by an underscore it shows the timestamp, which marks the time of the motion detection.

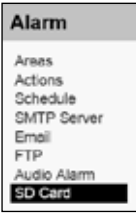
Please refer to www.wiki.instar.com for information on how to set up a FTP server.

5.5.7 ALARM/AUDIO ALARM



The camera's Audio Alarm uses the integrated microphone to detect noises and trigger alarm events. These events are handled just like motion detection events and will trigger the activated Alarm Actions (s. 5.5.2). Please be aware that the sensitivity of the detection is both influenced by the sensitivity slider here, as well as by the overall volume of the microphone signal. You can adjust the amplification of the signal in the Multi-media section (s. 5.4.1).

5.5.8 ALARM/SD CARD

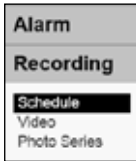


Please check the corresponding box and click *submit* to either **format** or **unmount** your SD card.

A click on the link above the submit button will lead you to the SD card **directory** where all your snapshots and videos will be stored. Use your camera admin login to access the directory.

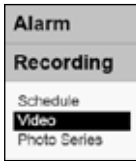
5.6 | RECORDING

5.6.1 RECORDING/SCHEDULE



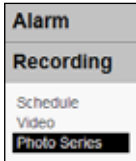
Use the schedule to program planned video or snapshot recordings (e.g. for time-lapses). Every blue box represents 30min of activity. The recorded files will be stored to the camera's internal SD card. The filenames will start with a capital "P" to differentiate them from alarm recordings "A" and test images that start with a "T".

5.6.2 RECORDING/VIDEO



The planned video recording, that was activated in 5.6.1, can be configured here. The recording will create files with the length and resolution that are defined here.


5.6.3 RECORDING/PHOTOSERIES




Set if you want to receive the snapshots that were created by the photo series (s. 5.6.1) by email, store them on the internal SD card or upload them to a FTP server. In the last case you will have the option to set a fixed file name, so that the previous will always be overwritten - which is useful if you plan to embedd the image into a website.

5.7 | MENU BAR

5.7.1 MENU BAR/SD CARD


 Click on the SD Card to open the SD cards directory in a new browser window or tab - all your snapshots and videos will be listed. Use your camera admin login to access the directory.

5.7.2 MENU BAR/SNAPSHOT


 Click on Snapshot to save a single JPG snapshot of the current video frame. For Internet Explorer the snapshot will be saved locally in the subfolder **Snap** under the record path that is set in **5.8.4 (only Internet Explorer)**. Otherwise the snapshot will be opened in a new browser window or tab and can be saved from there. You might have to set the cameras address (local IP or DDNS address) as a trusted site inside the **Internet Options** of your Internet Explorer to allow write access to your harddisk!

5.7.3 MENU BAR/RECORD (*only Internet Explorer*)




 Click on *Record* to manually start a video recording. The video will be saved in the subfolder “*Record*” under the record path that is set in **5.8.4**. You will see the **red indicator** in the video menu when the camera is recording. You might have to set the cameras address (local IP or DDNS address) as a trusted site inside the **Internet Options** of your Internet Explorer to be give write access to your harddisk!


5.7.4 MENU BAR/PLAYER (*only Internet Explorer*)

 By clicking on *Player* you can start a simple video player to play your recorded video files.


5.7.5 MENU BAR/HELP

 Clicking on *Help* will bring you to our constantly expanding online FAQ section on www.instar.de.

5.7.6 MENU BAR/MJPEG (h.264)

 Here you can switch between the cameras h.264 and MJPEG videostream - s. also 5.4.2.

5.7.7 MENU BAR/ALARM

 Clicking on *Alarm* activates or deactivates the alarm settings (s. 5.5.1). If the motion detection is armed the letters will be displayed in red.

5.8 VIDEO MENU BAR

5.8.1 VIDEO MENU BAR/AUDIO (*only Internet Explorer*)



Click here to activate the cameras audiostream. You can adjust the volume of the audio signal under 5.4.1.

5.8.2 VIDEO MENU BAR/MICROPHONE (*only Internet Explorer*)



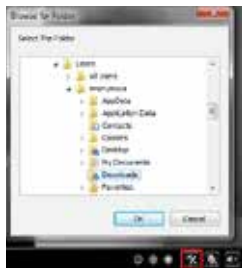
In case your PC is equipped with a microphone click here to activate the audio-out of your camera.

5.8.3 VIDEO MENU BAR/DIGITAL ZOOM (*only Internet Explorer*)



Click here to adjust the cameras 3 x digital zoom.

5.8.4 VIDEO MENU BAR/RECORD PATH (*only Internet Explorer*)



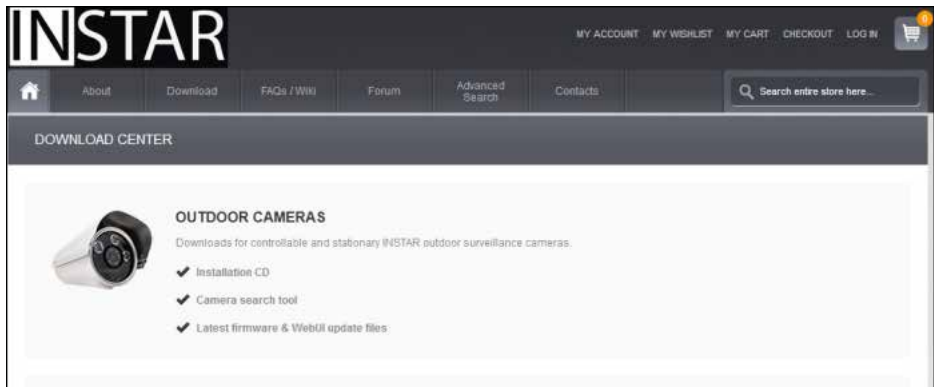
Here you can set the record path for your videos and snapshots. The set path is used by **all** your INSTAR Megapixel Cameras! Your camera will automatically create subdirectories with the current date and its IP address when you start recording or take a snapshot. All snapshots will be saved in the subdirectory “*Snap*” and all videos in the subdirectory “*Record*”.

5.9 WEB USER INTERFACE UPDATE

How to upgrade to a new WebUI or Firmware

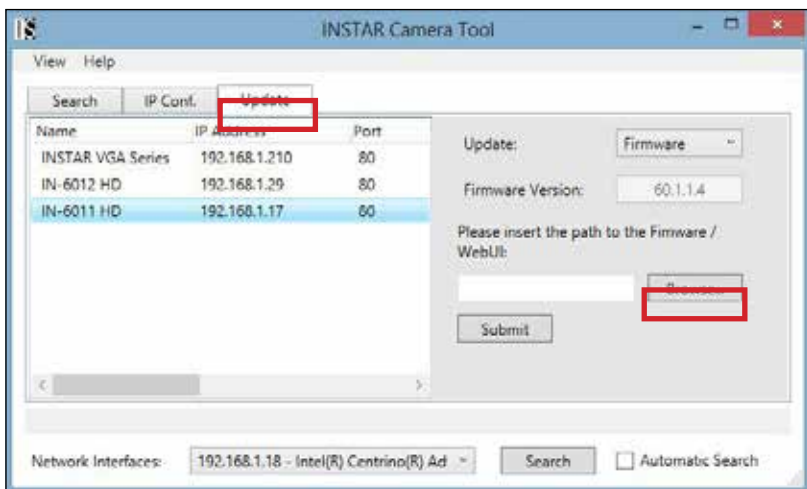
Please download the newest version of the WebUI or Firmware from our website. Please follow the link below to our homepage's download section:

www.download.instar.de



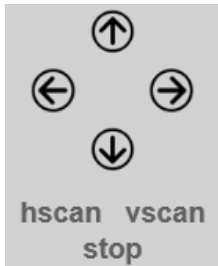
Simply select your camera model, scroll to the bottom part of the website and choose the newest Software/Firmware for your IP camera.

The firmware or webUI file can be uploaded to your camera via the web userinterface (s.5.1.4) or by using the INSTAR camera tool.



5.9 | PAN & TILT CONTROL

5.9.2 PAN&TILT CONTROL/CONTROL PAD



You can use the control pad to pan and tilt your camera's head. You can also start a horizontal (*hscan*) or vertical (*vscan*) patrol or stop the camera's movement (*stop*). The camera will move in both patrols into the according terminal positions and then go back to the initial position. If you are using the Internet Explorer you can also click into the boundary areas of the video frame to move the camera into the respective direction and double-clicking the center of the frame will get you into a full screen mode.

5.9.3 PAN&TILT CONTROL/POSITIONS



You can save up to 8 camera orientations by moving the camera into the desired direction and clicking on one of the numbered slots after choosing *Save Position*. Clicking on the slots 1-8 when *Go to Position* is activated will move the camera back to the saved position. You can delete all positions by clicking on *Reset all Positions*. **Position 1 defines the startup position of your camera!**

Please be advised: The accuracy of the positions will degrade over time. Please restart your camera once in a while to enforce a re-calibration.

6 RESET YOUR CAMERA

In order to reset your camera (if you have lost your password), please hold the small reset button in the rear part of the camera's casing (see 3 #13) for min. 15 seconds. Please make sure the camera is connected to the power supply and disconnected from the LAN cable. In case the reset was incomplete the camera might become inresponsive. Please repeat the reset for **min. 15 s** and unplug it **over night** from the power supply before trying to restart it again.

7 | LENSE ADJUSTMENT

The IN-6014 HD's lens offers a limited field depth that was adjusted to a field between 1m to 8m. In case the object you want to observe lies outside of this area, you will have to adjust the lens accordingly.



Fig. 1



Fig. 2

Fig. 1/2 Connect the camera to the powersupply and the network cable. Open the web interface and turn the lens until you can see a clear and sharp picture.

8 | Android, Windows Phone and iPhone App



To integrate your IP camera in the Android/iPhone/WinPhone8 App “InstarVision” we recommend to first download the newest version in the App Store. To find the newest version just type “instar” for the search.

(Fig. 1) After installing the newest version please start the App to open the following interface (s. next page).

(Fig. 2) Now press the new camera button and type in all necessary data for your IP camera.

(Fig. 3) Adjust your camera parameter over the apps user interface.

(Fig. 4) Press a channel to access the corresponding livestream and take control over your camera.

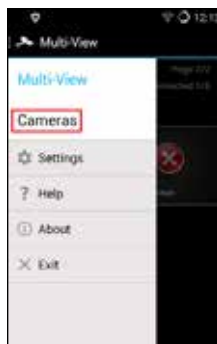


Fig. 1

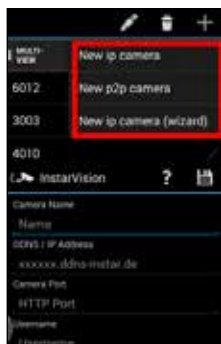


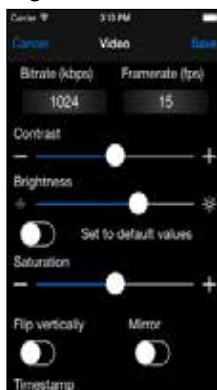
Fig. 2



Fig. 3



Fig. 4



Here you find a short overview of all necessary settings (Fig.2):

- Name:** Please choose a name for each camera so you can differentiate between your cameras.
- Host/IP Address:** Here you have to type in the IP address of the camera or the DDNS address (see 5.2.3).
- Port:** Type in the HTTP Port which you assigned to your IP camera. The standard Port is "80".
- Username:** The username with which you log in to your camera. The admin account name is "admin".
- Password:** The password with which you log in to your camera. As default the password is "instar".
- Model:** Please choose your INSTAR camera model.

Now please choose "Add Camera" to save the settings and to return to the home screen (Fig.3).



InstarVision® is a 16/32 Channel Video Surveillance Software for Windows (the number of available channels depends on your license!) The Software can record the live stream of any Webcam, TV Cards, Video-Recording Cards (DVR), INSTAR IP Camera or other devices with up to 30 fps.

InstarVision® covers below features:

- 1). Advanced motion detection algorithm with a mask matrix – free adaption of the motion detection mask with a 64 square resolution inside the picture.
- 2). Multiple ways of notification are available in case of an alarm - by email, FTP upload, acoustic alarm or by 3rd party software triggering.
- 3). Easy integration of the camera's audio & video stream into websites - present your live video to friends, family or customers through your homepage.
- 4). Support for multiple video output formats: such as MP4, MOV, FLV, SWF, WMV and AVI and video codecs like H.264, MPEG4 and WMV3.
- 5). An affordable price and all the functions necessary to achieve your camera's full potential.

A detailed online manual can be found on www.instarvision.de and a 7-day trial version can be downloaded from our homepage www.download.instar.de.

(e.g. VLC Player, iSpy..)

To use third party software you mostly need the direct path for the live video in order to grab the video from your camera. Then the program is able to grab the videostream from your camera to work with it. You can find step-by-step instruction for several software on our help pages on www.instar.de.

Access over your local network:

Please use the following path to use your camera with third party software:

RTSP Stream 1: <rtsp://<user>:<password>@192.168.x.x:<RTSP Port>/11>

RTSP Stream 2: <rtsp://<user>:<password>@192.168.x.x:<RTSP Port>/12>

RTSP Stream 3: <rtsp://<user>:<password>@192.168.x.x:<RTSP Port>/13>

JPG Pfad: <http://<Benutzer>:<Passwort>@192.168.x.x/tmpfs/snap.jpg>

Please use your camera login for the *user* and *password* values:

E.g.. <rtsp://admin:123456@192.168.1.25:554/11>

Just substitute the “x” according to the IP address of your camera (in case of a Netgear router the first x = 1 and the second x = the end octet of your cameras IP). If you changed your RTSP port (standard = 554) please change the value after the IP address accordingly.

Attention: To access the cameras RTSP stream through the internet you will have to forward the RTSP port (standard = 554) to your cameras IP address. See **chapter 5.2.3** and the forwarding procedure for the LAN (HTTP) Port (standard 80) for reference.

Access via internet:

Please use your DDNS address to remote access your cameras RTSP stream:

<rtsp://<user>:<password>@xxx.ddns-instar.de:<RTSP Port>/11>

xxx = please check your personal DDNS address under network/DDNS (s. 5.2.3)

Tip: Your camera offers you 3 RTSP streams with different bitrates. Please choose stream 2 or 3 if your available bandwidth is limited or you are using a computer with limited processing power (e.g. tablet). You might encounter this problem especially when accessing your camera via the internet, since normal DSL connections have a relatively low upload rates.

Image Sensor	
Sensor	1/3" Megapixel WDR CMOS
Resolution	max. 1280x720 Pixel (1.0 Megapixel)
Lense	f = 4.3 mm; F/1.2 (IR Lense)
Angle of View	90 ° diagonal
Min. Illumination	0.5 Lux @ F/1.2
Video Properties	
Video Encoding	h.264/MPEG-4 AVC (Level3)
Alternative Encoding	MJPEG (no plugins needed)
Video Framerate	Up to 25fps
Supported Resolutions	1280 x 720, 640 x 352 and 320 x 176
Bitrate	90 kbps ~ 6.144 kbps
Flip/Mirror Image	Horizontal / Vertical
Video Settings	Brightness / Contrast / Saturation
Communication	
Network Interface	10Base-T/100Base-TX Ethernet Port
Supported Protokols	TCP/IP, HTTP, SMTP, RTSP, FTP, DHCP, DDNS, UPNP, NTP
Wireless (not in the PoE version)	2.4 GHz 802.11b/g/n 150Mbps
WPA/2 Encryption	TKIP / AES (CCMP)
PoE Standard (only in the PoE version)	IEEE 802.3af <i>Power-over-Ethernet</i>
Hardware	
PIR Detector	Passive Infrared Motion Detector
Infrared LED's	12 LED's/ 5-8m effective range
SD Card Reader	For SDHC cards up to 32 GB
SD Card	4 GB SDHC included
Pan & Tilt	350° horizontal / 90° vertical
Power Supply	DC 5V / 1.5A (50-60Hz/110-220V)
Power Consumption	max. 8 W (4W in normal operation)
Operating Temperature	- 5°C to 55°C
PC System Requirements	
CPU	2GHz or above
System Memory	2 GB or more
Graphic Card Memory	1 GB or more (z.B. GT425M or similar)
Supported Operating Systems	Windows XP / Vista / 7 / 8, Mac OS, Linux, iOS, Android

Warranty

INSTAR offers a 2-year warranty on its products. During this period you can send in your camera for a free repair. This excludes cameras installed with custom-made or 3rd party Firmware and WebUIs which have not been approved by INSTAR. The warranty is only for hardware parts of the camera.

If you are contacting our Service Team please keep your model and serial number ready. If you want to send your camera for repair, please use the RMA form that came with your camera. You can also download it from our website www.instar.com or contact the INSTAR Service Team.

You can find your INSTAR SERVICE CENTER at the following destination:

Company:

INSTAR Deutschland GmbH

Raiffeisenstraße 12

65510 Hünstetten Bechtheim

Germany

Hotline: +49 (6438) 9198992

(Mo - Fr, 8 – 14 o'clock GMT+1)

Website: www.instar.com

Email: support@instar.com

WE WILL HELP YOU ANY TIME AFTER YOUR PURCHASE!

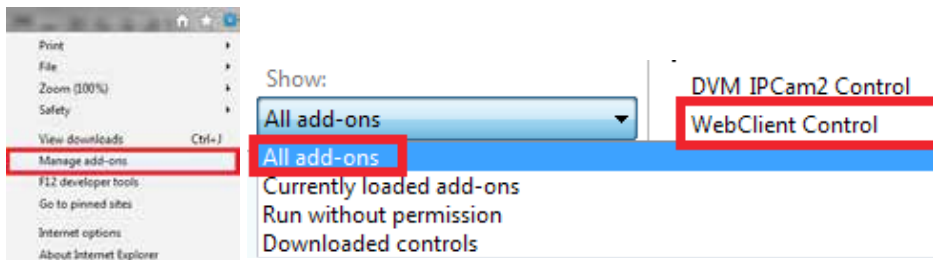
Disposal of old electrical appliances

The European Directive 2002/96/EC on Waste Electrical and Electronic Equipment (WEEE), requires that old household electrical appliances must not be disposed of in the normal unsorted municipal waste stream. Old appliances must be collected separately in order to optimize the recovery and recycling of the materials they contain and reduce the impact on human health and the environment. The crossed out “wheeled bin” symbols on the product reminds you of your obligation, that when you dispose of the appliance it must be separately collected. Consumers should contact their local authority or retailer for information concerning the correct disposal of their old appliance.

Questions & Answers

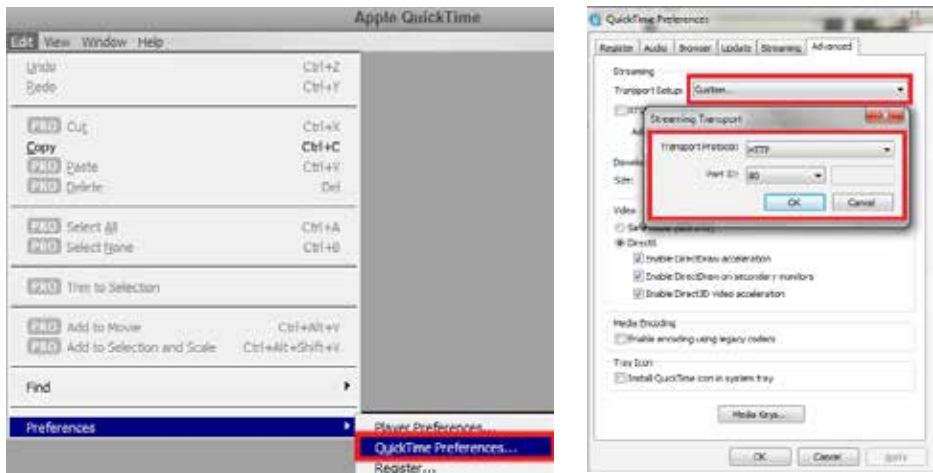
1) The video doesn't start in Internet Explorer?

Please make sure that you installed the Active Control Element (s. page 10). You can always install the element manually from the software CD in case the automatic installation doesn't work. To check whether the installation was successful please open the "Manage add-ons" window in the "Extras" menu of your Internet Explorers and choose "All add-ons" - the element *WebClientControl* has to be listed as *active*.



2) The video doesn't start in Firefox, Chrome or Safari?

You need the QuickTime plugin to play the video. Please install the QuickTime Player from www.apple.com/quicktime and allow the camera web user interface to use the plugin when asked. In case the video doesn't start right away open the QuickTime Player and set the Transport Protocol to **HTTP** and the Port ID to **80** (s. below).



The QuickTime plugin is preconfigured to buffer the videostream for 3 seconds - you will therefore, always encounter a **3 seconds delay** in your video display!

3) Lost your password?

If you lost your administration password you will have to reset your camera to the factory defaults. Please press the reset button in the back panel of the camera for at least 15s! The camera needs to be under power and unplugged from the network. After the reset all passwords are set to their default values:

Defaults	User Name	Password
Administrator	admin	instar
User	user	instar
Guest	guest	instar

4) No access via the internet?

Your camera automatically sends its WAN IP address to the INSTAR DDNS server during the first start-up. It can take up to 12 hours before you can reach your camera via the ddns-instar address - usually it takes about **30 minutes**. Please note that you first have to set up a port forwarding rule in your router (s. 5.2.3). In case you can still not access your camera, please try to change the HTTP (LAN) port of your camera (standard 80) - for example to port 8081 (s. 5.2.1). Remember to adjust the port forwarding rule in your router accordingly. When the HTTP port is unequal to 80 you will have to add the port with a colon to the DDNS address - e.g. xxxx.ddns-instar.com:8081.

Usually it is possible to access your camera remotely when it is installed behind a **UMTS, 3G or LTE** router. But you might need a special internet package that provides you with a static WAN IP address. If setting up a port forwarding is not an option, please refer to the included flyer **Plug&Play** for details on the Point2Point connection service. **The p2p service will work behind mobile access point as well as IPv6 internet connections!**

For more information and mor FAQs please visit our Wiki:

<http://faq.instar.de/>

14 | AVAILABLE ACCESSORIES

We are continously expanding our range of accessories. For a complete overview please refer to our accessory page on www.instar.com.

PERSONAL NOTES

[illegible]